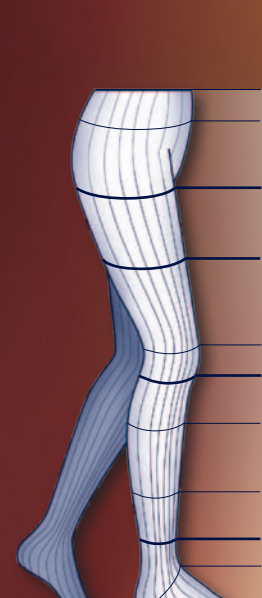


## MANY MODELS, SUBTLE TONE.

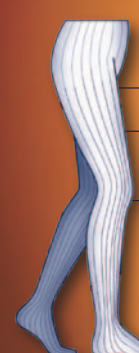
This medical compression stocking for highest requirements is the first choice in serious venous problems both for women and also for men.

TRADITIONAL is available in many sizes and model versions, as a series production or made-to-measure option, in compression classes 2, 3 and 4.



c in cm	x-small*	small	small PLUS	medium	medium PLUS	large	large PLUS	x-large*	x-large PLUS*
cT		up to 80	up to 80	up to 90	up to 90	up to 100	up to 100		
cH		up to 110	up to 110	up to 120	up to 120	up to 130	up to 130		
cG	<b>40-50</b>	<b>42-52</b>	<b>50-60</b>	<b>50-60</b>	<b>58-68</b>	<b>58-68</b>	<b>66-76</b>	<b>61-71</b>	<b>69-79</b>
cF	<b>39-48</b>	<b>41-50</b>	<b>45-54</b>	<b>48-57</b>	<b>53-62</b>	<b>55-64</b>	<b>61-70</b>	<b>58-67</b>	<b>64-73</b>
cE	29-34	32-37	36-41	35-40	40-45	38-43	44-49	41-46	48-53
cD	<b>26-32</b>	<b>28-34</b>	<b>32-38</b>	<b>31-37</b>	<b>36-42</b>	<b>34-40</b>	<b>40-46</b>	<b>38-43</b>	<b>44-49</b>
cC	28-31	31-36	35-40	34-39	39-44	37-42	43-48	40-45	47-52
cB <sup>1</sup>	21-24	24-29	24-29	29-32	29-32	32-36	32-36	35-39	35-39
cB	<b>17-19</b>	<b>19-23</b>	<b>19-23</b>	<b>23-26</b>	<b>23-26</b>	<b>26-29</b>	<b>26-29</b>	<b>29-32</b>	<b>29-32</b>
cY	25-28	28-32	28-32	32-35	32-35	35-38	35-38	38-41	38-41
cA	17-19	19-23	19-23	23-26	23-26	26-29	26-29	29-32	29-32

\*only selected models



Length in cm	Length in cm							
	short		long		short		long	
ℓG	33-37	38-44	56-60	61-70	61-70	61-70	71-80	71-80
ℓF	33-37	38-44	56-60	61-70	61-70	71-80	71-80	71-80
ℓD	ℓD		ℓF		ℓG		ℓG	

c = circumference  
ℓ = length

TRADITIONAL				
CCL		2	3	4
<b>Models</b>				
A-D Calf	with soft top	●	●	● <sup>1)</sup>
A-F Half-thigh	with soft top	●	●	● <sup>1)</sup>
	with grip top	●	●	■
A-G Thigh	with soft top	●	●	● <sup>1)</sup>
	with grip top	●	●	■
	with waist attachment (left or right)	●	● <sup>1)</sup>	■
A-T Panty		● <sup>1)</sup>	■	■
A-T Panty Bodyform	with compressing panty section	■	■	■
A-T Panty Materna	for pregnant women and larger sizes	● <sup>1)</sup>	■	■
A-T Panty for men	with fly (left, right or horizontal)	● <sup>1)</sup>	■	■
open toe			●	
closed toe			■	
<b>Grip tops</b>				
knobbed grip top (KGT)				
<b>Colour</b>				
BEIGE				

CCL = Compression class  
● Series production and made-to-measure articles  
■ Made-to-measure articles

<sup>1)</sup> only in PLUS

#### Material composition:

70% polyamide, 30% elastodiene

Wash daily using a laundry bag

Do not use fabric softener

Do not place in dryer

Do not iron

Do not dry clean

#### SIGVARIS AG

Gröblistrasse 8

CH-9014 St. Gallen

Tel. +41 (0) 71 279 33 66

Fax +41 (0) 71 274 29 29

www.sigvaris-export.com

SIGVARIS is the world market leader in the field of medical compression stockings, available in over 70 countries. SIGVARIS, LIFE FOR LEGS and the leg icon are registered trademarks of SIGVARIS AG, CH-9014 St. Gallen/Switzerland, in many countries worldwide.  
© = 2011 Copyright by SIGVARIS AG, St. Gallen/Switzerland

Helitz/1000/11-2011/VV4/18457\_Ex

# SIGVARIS

LIFE FOR LEGS



## TRADITIONAL – THE ORIGINAL



## TRADITIONAL – A TRUE CLASSIC

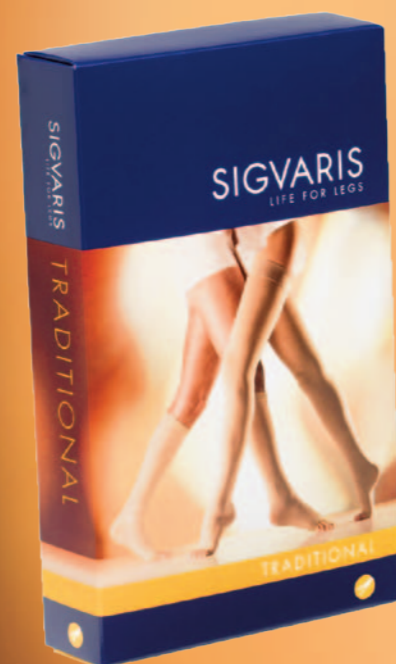
Whenever high medical effectiveness is important, TRADITIONAL is the reliable classic.



Thus, it is the therapeutic measure of first choice – for example after thromboses, in chronic venous disorders or in lymphatic diseases. Since TRADITIONAL is especially elastic and air-permeable, it is wonderful to wear. Day after day, it provides a feeling of confidence in the legs and thus ensures medical compression of the highest level. The doubly wound inlaid thread made of natural rubber adapts wonderfully to the leg and the neutral skin tone harmonizes with any type of clothing.

**Furthermore: TRADITIONAL can be perfectly combined with all fine stockings!**

- Highest pressure stability throughout the entire day
- Excellent force-elasticity relationship
- High medical effectiveness for a safe and successful therapy

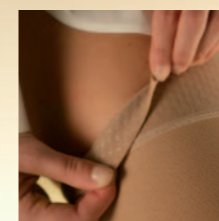


## COMPLETE PRODUCT RANGE

Effectiveness at the highest level.

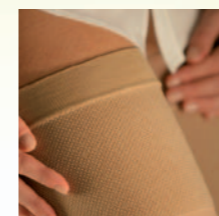
Technically complicated refined natural rubber makes TRADITIONAL strong in every respect.

The unique force-elasticity relationship and highest pressure stability throughout the entire day ensure an effective treatment of severe venous diseases and provide safety during therapy.



### KNOBBED GRIP TOP (KGT)

Soft knobs prevent the stocking from slipping. For a secure hold – all day long.



### SOFT TOP (ST)

The elastic soft top adapts to the leg and provides comfortable support.



### CALF STOCKING OPEN

Ideal in Summer: Lets the toes have some air – and that is a good feeling.



### THIGH STOCKING WITH WAIST ATTACHMENT

For special requirements.



### HALF-THIGH STOCKING/ THIGH STOCKING KGT + ST

For high therapeutic requirements – and all those who want to play it safe.



### PANTY

For pregnant women and larger sizes also available as Panty Materna.

## TRADITIONAL QUALITY AT A GLANCE

Soft, elastic top-end

Easy to slip on and off, thanks to extremely elastic natural rubber yarn

Durable elasticized heel, knitted to mold to your foot

Long wear-life, permeability and durability, thanks to the double-covering of the knitted and inserted yarns

Gradual, medically correct reduction of the compression in accordance with the GZG guidelines

Easing of the compression thanks to the highly elastic, knitted foot section

