

SIGVARIS

SIGVARIS

LIFE FOR LEGS

THROMBO-X



GANZONI & CIE AG
Gröblistrasse 8
CH-9014 St.Gallen
Tel. +41 (0)71 279 33 66
Fax +41 (0)71 274 29 29
www.sigvaris-export.com

SIGVARIS, LIFE FOR LEGS, the leg icon and «Thrombo» are registered trademarks of Ganzoni & Cie AG, CH-9014 St.Gallen/Switzerland, in many countries worldwide.

© 2009 Copyright by Ganzoni & Cie AG, St. Gallen/Switzerland



HZ/300/032010/V2/42948_Es

Thrombose-Prophylaxe-Strumpf
Anti-Embolism-Stocking
Calza antiembolia
Bas pour la prophylaxie de la thrombose



EIGENSCHAFTEN

- Thrombose-Prophylaxe-Strumpf mit stufenlos abnehmendem Druck
- Kompression 18mmHg im Fesselbereich (HATRA)
- Atmungsaktiv, vermeidet Wärmestau
- Hautfreundlich
- Weich und fein, leicht anzuziehen
- Sitzt einwandfrei und faltenlos, ohne zu rutschen
- Pendelferse & Spitze und Inspektionsloch bei allen Modellen
- Verstellbares Band mit Hüftbefestigung bei Schenkelstrumpf

FEATURES

- Anti-Embolic Stockings with graduated compression from the ankle to the thigh
- Compression 18mmHg at the ankle (HATRA)
- Ventilated knitwear to keep the limb cool, resistant to topical applications and perspiration
- Pleasant to the skin
- Soft and fine, easy to put on
- Wrinkle free and comfortable, does not slip down
- Reciprocated heel & toe and inspection hole in all models
- Adjustable belt on the thigh with waist attachment, grip top on the thigh stocking

CARATTERISTICHE

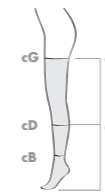
- Calza antiembolia con una compressione decrescente dalla caviglia alla coscia
- Compressione 18mmHg alla caviglia (HATRA)
- Maglia a rete con ottima traspirazione
- Ben tollerata dalla pelle
- Morbida e leggera, si indossa con facilità
- Perfetta vestibilità non fa pieghe e non scivola
- Vero tallone & punta e foro d'ispezione in tutti i modelli
- Cinturino regolabile nel mono collant, bordo siliconato nella calza

CARACTERISTIQUES

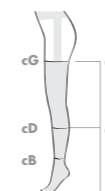
- Bas à compression élastique dégressive pour la prophylaxie de la thrombose
- Compression de 18mmHg au niveau de la cheville (HATRA)
- Matériaux qui respirent, favorisant l'équilibre thermique
- Tolérance cutanée élevée
- Souple et fin, facile à enfiler
- Assise parfaite sans former de plis et sans glisser
- Tous les modèles avec talon renforcé et ouverture d'inspection
- Bande réglable des bas pour cuisse avec dispositif de fixation, bord antiglisse des bas pour cuisse



Length - l (cm)	small	medium	large	x-large
short max. 34	cB 18-22 cm	cB 22-26 cm	cB 26-29 cm	cB 29-32 cm
normal 34-39				
long min. 39	cD 30-35 cm	cD 35-40 cm	cD 40-45 cm	cD 45-50 cm



Length - l (cm)	small	medium	large	x-large
short max. 74	cB 18-22 cm	cB 22-26 cm	cB 26-29 cm	cB 29-32 cm
normal 74-84	cD 30-35 cm	cD 35-40 cm	cD 40-45 cm	cD 45-50 cm
long min. 84	cG max. 66 cm	cG max. 66 cm	cG max. 66 cm	cG max. 66 cm



Length - l (cm)	small	medium	large	x-large
short max. 74	cB 18-22 cm	cB 22-26 cm	cB 26-29 cm	cB 29-32 cm
normal 74-84	cD 30-35 cm	cD 35-40 cm	cD 40-45 cm	cD 45-50 cm
long min. 84	cG max. 66 cm	cG max. 66 cm	cG max. 66 cm	cG max. 66 cm

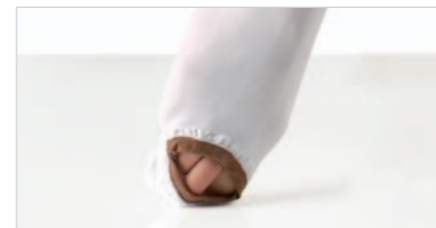
short
normal
long



Verstellbares Band
Adjustable belt
Cinturino regolabile
Bande réglable



Haftband
Grip top
Bordo siliconato
Bord antiglisse



Inspektionsloch
Inspection hole
Foro d'ispezione
Ouverture d'inspection

INDIKATIONEN

- In allen Situationen mit erhöhtem Thromboserisiko:
- Chirurgische Eingriffe (speziell bei Bauch-, Unterleibs- und orthopädischen Operationen)
 - Brüche oder Verletzungen der Beine
 - Eingeschränkte Mobilität

INDICATIONS

- All situations that increase the risk of thrombosis:
- Surgery (especially abdominal-pelvic and orthopedic surgery)
 - Fractures or injuries of the lower limbs
 - Impaired mobility

INDICAZIONI

- Tutte le situazioni che aumentano il rischio di trombosi:
- Interventi chirurgici (specialmente addomino-pelvici ed ortopedici)
 - Fratture o traumi agli arti inferiori
 - Riduzione della mobilità

INDICATIONS

- Toutes les situations présentant un risque de thrombose accru:
- Interventions chirurgicales (particulièrement abdominales et orthopédiques)
 - Fractures ou lésions des jambes
 - Mobilité limitée

KONTRAINDIKATIONEN

- Dermatitis
- Arterielle Erkrankung
- Nicht auf offenen Wunden anwenden

CONTRAINDICATIONS

- Dermatitis
- Arterial diseases
- Do not use on open wounds

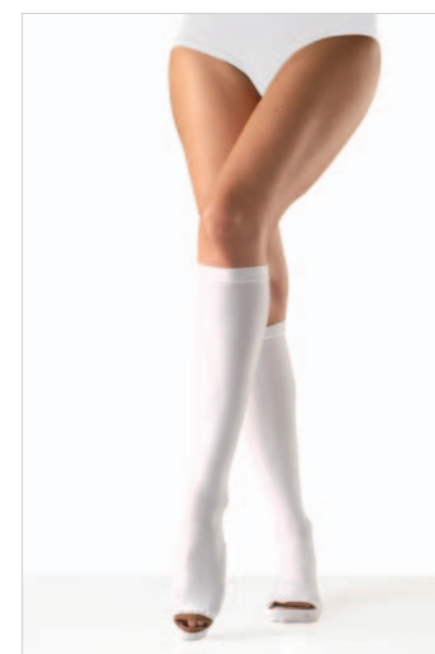
CONTROINDICAZIONI

- Dermatiti
- Arteriopatie
- Non indossare sulla pelle lesa

CONTRE-INDICATIONS

- Dermatitis
- Maladies artérielles
- Ne pas appliquer sur les plaies ouvertes

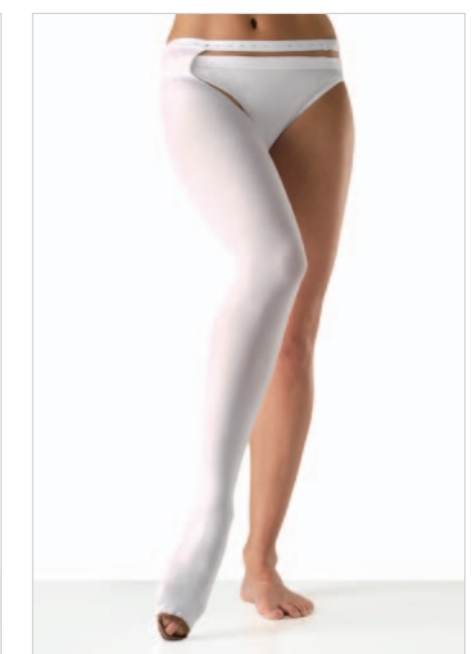
Zusammensetzung/Composition/Composizione/Composition:
75 % Polyamide, 25 % Elastane



Waden
Calf
Gambaletto
Mollet



Schenkel mit Haftband
Thigh with grip-top
Calza con bordo siliconato
Cuisse avec bord antiglisse



Schenkel mit Hüftbefestigung
Thigh with waist attachment
Monocollant con cintura
Cuisse avec dispositif de fixation